

SUSTAINABILITY & RESPONSIBILITY



SHAPING THE WORLD OF TOMORROW



At SWARCO, corporate responsibility towards the environment and society plays an important role. That's also why we take numerous steps to reduce our ecological footprint.

SWARCO INDUSFERICA: OUR COMMITMENT TO THE CIRCULAR ECONOMY

SWARCO Indusferica is actively committed to the circular economy and continuously optimizes its entire production process. The following measures ensure the sustainability of SWARCO Indusferica's glass beads:

- Use of secondary raw materials: By using high-grade recycled glass (post-industrial waste) from the flat glass industry, we need significantly less energy in the glass bead production process.
- Traceability and regionality: We prefer to source raw materials in the region to avoid transporting them over large distances and to strengthen the regional economy.
- Smart transport solutions: Combined road-rail transport for glass bead delivery reduces transport emissions.
- Sustainable packaging: We use highly recyclable packaging materials.
- Avoiding energy loss: We recover waste heat from the production process to heat buildings and supply heating energy to neighbouring industrial companies.
- Environmentally friendly materials: Glass beads by SWARCO Indusferica are inert and do not result in any appreciable downstream emissions.



100 – CRADLE-TO-GATE (CTG)

SCOPE 1-3

SWARCOFORCE
SWARCOBLAST

1.14
kg CO₂e/kg

GLASS BEADS WITH A SMALL CARBON FOOTPRINT

At a time when sustainability and environmental protection are becoming increasingly important, companies are called on to find innovative solutions that both improve the performance of their products and minimize any adverse environmental impact. With its innovative glass beads for special industry applications, SWARCO Indusferica is showing the way.

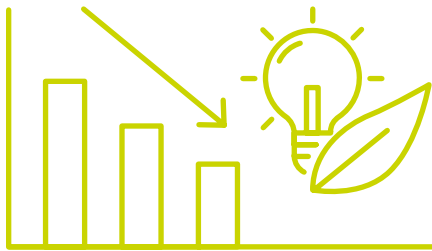
SETTING NEW STANDARDS IN ENVIRONMENTAL COMPATIBILITY

SWARCO Indusferica's environmentally friendly glass beads combine efficient performance with ecological responsibility.



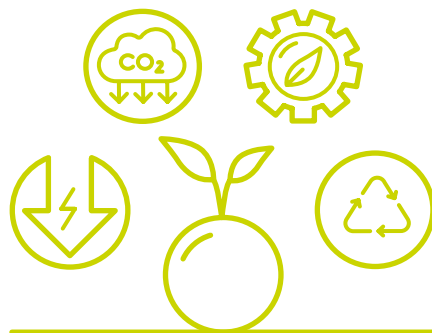
CRADLE-TO-GATE

All emissions are calculated as cradle-to-gate. This means that all emissions generated – from the extraction of raw materials all the way to the finished product – are taken into account, with the categories energy flow, material flow and company's emissions being determined for each product.



THE GREEN SOLUTION

SWARCO Indusferica uses the Ecochain Helix software solution to perform comprehensive life cycle assessments (LCAs). The entire life cycle is analyzed, from the extraction of raw materials all the way to the end of production (cradle-to-gate), including raw material use, transport emissions, the internal production process, waste disposal, staff commutes, business travel, and packaging. In this way, it is possible to determine the exact ecological footprint of products. The data that is collected is used for targeted research in order to continuously improve the carbon footprint.



AN EFFICIENT CIRCULAR ECONOMY

Glass beads by SWARCO Indusferica are made from high-grade recycled glass (post-industrial waste), which allows for considerable energy savings. The glass is sourced regionally to avoid transport over large distances. Deliveries are made using combined road-rail transport, where possible, to reduce emissions, and packaging is resource efficient and highly recyclable. Waste heat from the production process is recovered to heat buildings and supply heating energy to neighbouring industrial companies. The glass beads are inert and do not result in any appreciable downstream emissions. SWARCO Indusferica is deeply committed to the circular economy and energy efficiency in order to make the products as sustainable as possible.

SUSTAINABLE DEVELOPMENT

We align our actions with the UN Sustainable Development Goals (SDGs). By investing in sustainable infrastructure (SDG 9), strengthening sustainable production and consumption (SDG 12) as well as increasingly using renewable energies and reducing greenhouse gas emissions (SDG 13), we are actively contributing to building a sustainable future.



SWARCO Indusferica | indusferica@swarco.com | www.swarco.com/indusferica

Imprint: Responsible for content: SWARCO Indusferica, Wipark, 14. Straße 11, 3363 Neufurth, Austria, www.swarco.com/indusferica | Idea, design and artwork: studio0816.at | English translation: Irina Pálffy-Daun-Seiler | Printed by druck.at. Subject to change without notice. No liability for errors or misprints. For the sake of brevity, only one gender may be used on occasion. However, this does not imply any discrimination against the other gender.

© 04/2023 SWARCO



Follow.
Like.
Share.

