

SWARCO LOOPMASTER

SERVICE SOFTWARE

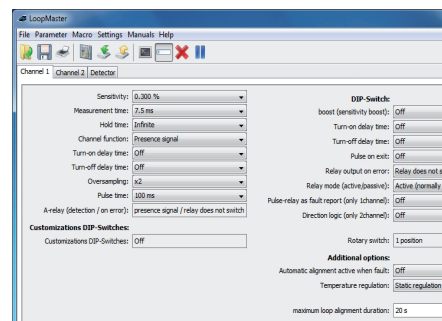
OPERATION OF LOOP DETECTORS VIA SERIAL INTERFACE ON FRONT

The LoopMaster operating software is used to bring the loop detectors into operation, for service assignments, for saving detector parameters as well as for start-up protocols.



FEATURES

- Support of the the complete loop detector product portfolio
- Automatic recognition of detector type and loop configuration
- Optimum support of detector configuration and analysis
- Offline generation of detector parameter sets
- Convenient comparison dialog for arbitrary channels
- Clearly arranged user interface with context help and full-text search function
- Multilingual, with automatic recognition of operating system language
- Online help function and access to current detector user manuals
- Graphic print function of all detector parameters
- Support request at the push of a button
- Support of USB serial adapters and automatic run time detection
- Java-based, optimized for Windows® version 10 (64 Bit) and 8.1 (64 Bit)

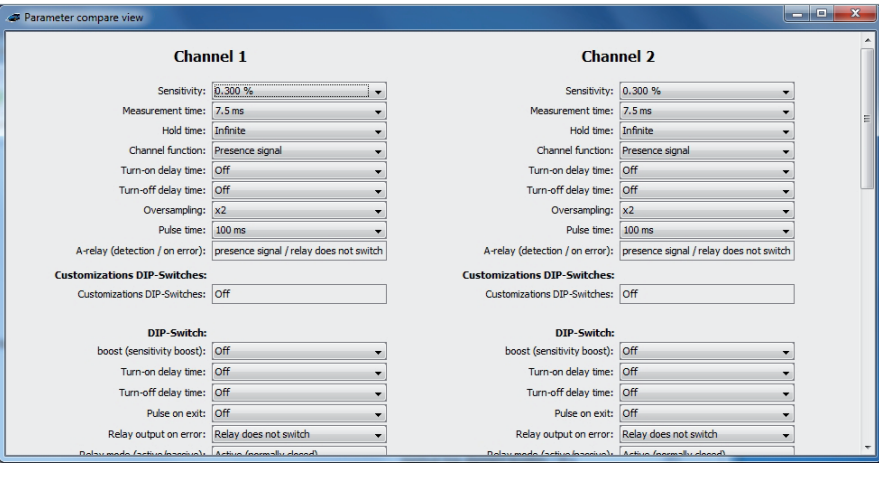


LOOPMASTER SERVICE SOFTWARE

FUNCTIONAL DESCRIPTION

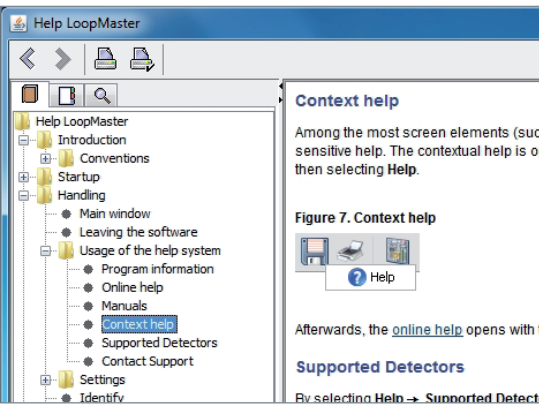
With the service software „LoopMaster“ you can operate all current SWARCO TRAFFIC SYSTEMS loop detectors. The connection to the detector via serial interface or USB adapter is autonomously detected. Also, new detectors or recently-added interfaces are automatically displayed even during operation.

During each communication set-up, detector type and loop configuration are automatically detected and all relevant parameters are displayed in a clearly-arranged way. The operating parameters can intuitively be set, edited and saved. For comfortable preparation, the detector parameter sets can be generated and saved while being offline. Supporting the service staff on location and perfectly scheduling service operations are thus a pushover.



The software optimally supports analysis and trouble-shooting. Clear-text information and diagnosis values are displayed for connected detectors and individual detector channels. The convenient comparison dialog for arbitrary channels gives additional overview of the channel and parameter differences. For documentation means, the program includes a graphic print function for all detector parameters.

The Java-based application is optimized for Windows® version 10 (64 Bit) and 8.1 (64 Bit) and offers all standards.



The program includes a multi-lingual user interface and automatically recognizes the operating system language. The practical online help with comfortable full-text search and context-sensitive help function go without saying. Additionally, LoopMaster provides all detector user manuals offline.

However, should you still encounter a problem you can send a request to the SWARCO TRAFFIC SYSTEMS support hotline at the push of a button. With this, all relevant data will be prepared and forwarded on demand. Thus, the prompt and optimum support by our experts is guaranteed.

