

# SWARCO

# COMBIA – CILANE

Traffic Signal

## THE TRAFFIC LIGHT OF TOMORROW



### THE SMART LED TRAFFIC SIGNAL

The LED traffic signal CILANE is a variant of the COMBIA traffic light family, which is not only made of UV-stabilized polycarbonate, but has also powder coated aluminum cover and rear panel. This combination of polycarbonate and aluminium gives this signal head an elegant, shapely design. Either the modern one-point or the classical two-point fixing are possible for CILANE. Smart additional functions can be integrated individually and turn this traffic signal into an intelligent system.



**SafeLight**  
Ground projection for  
pedestrian safety



**Sound**  
Acoustic signal for  
pedestrian orientation



**AirDec**  
Measurement of air quality  
and environmental data

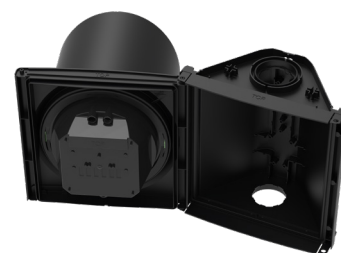


**LaneCom**  
Sensors for road user  
detection

# CILANE

## KEY BENEFITS

- the smart features „SafeLight, AirDec, LaneCom“ can be installed individually
- easily extendible and prepared for smart additional functions (CCAM)
- optional: integrated acoustic unit „Sound“ in half aspect
- shapely design – polycarbonate and aluminum
- Individual color combinations – aluminum rear design panel and cover
- faster maintenance: opening angle of the front doors to the left or right up to 175° at 200 mm and up to 150° at 300 mm
- reduced assembly time by simply and quickly opening the aspects
- simple type of clamping technology for LED cabling
- elastic, plug-in visors – optionally fixable with screws
- easy cable routing between the aspects
- modern one-point or classic two-point fixing
- mounting of backing boards is prepared
- additional installations can be integrated in the housing

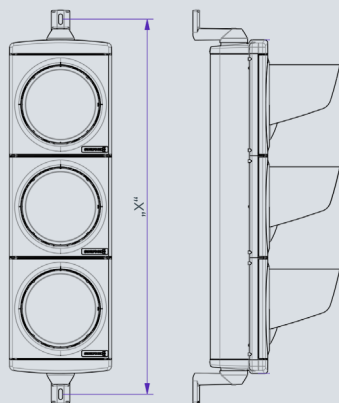


opening angle up to 175°

## TECHNICAL DETAILS

<b>Material</b>	UV-stabilized polycarbonate, powder coated aluminum: cover and rear panel
<b>Diameters, Mounting</b>	200 / 300 mm   aspects: 1-5, vertical or horizontal
<b>Smart features</b>	integrated as 1/2 aspect version for 200 mm, on top and / or bottom
<b>LED-Optic</b>	200 / 300 mm LED modules FUTURLED
<b>Two-point fixing</b>	<ul style="list-style-type: none"> <li>■ 105 mm brackets (Aluminium) (optional: 183 / 240 mm)</li> <li>■ fixing for ironflats or on cantilever bracket</li> <li>■ M12 / M20 mounting</li> </ul>
<b>One-point fixing</b>	<ul style="list-style-type: none"> <li>■ on top of a pole 42,5 / 64 / 76 mm</li> <li>■ DSI bracket</li> </ul>
<b>Backing boards</b>	fixing by means of domes on the back of the housing
<b>Front colour</b>	RAL 9005 black
<b>Colours of rear design panel and cover</b>	RAL 7032 light grey RAL 9005 black RAL 9006 white-aluminum more colours on request
<b>Certificates</b>	EN12368, CE

## DIMENSIONS



Two-point fixing

### 200 mm

Height „X“	1K	2K	3K	4K	5K
Alu 105 / 183 / 240	469 +/- 15	749 +/- 14	1029 +/- 13	1309 +/- 12	1589 +/- 9

### 300 mm

Height „X“	1K	2K	3K	4K	5K
Alu 105 / 183 / 240	554 +/- 15	924 +/- 14	1294 +/- 13	1664 +/- 12	2034 +/- 9

All figures in mm