

Installation Quick Reference TDC3 Traffic Detector

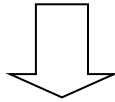
The following instructions must be closely followed to ensure optimal performance!

1 Mounting location

Detector in front of the gantry (Modells TDC3-X- F-F-31)	Detector behind the gantry (Modells TDC3-X- F-B-45 and TDC3- 2-B-B-xx)
<p>Traffic Direction</p> <p>Side View</p> <p>$\alpha = +7^\circ$ in respect to the road surface</p>	<p>Traffic Direction</p> <p>Side View</p> <p>$\alpha = -7^\circ$ in respect to the road surface</p>

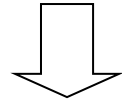
Important: Detector must have an unobstructed field of view for optimal performance!

Labels on detector look as shown below:



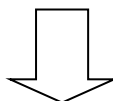
OR

Labels on detector look as shown below:



<p>TDC3-2-F-F-31 S/N: 04-00-01-16-35-001 ID: 1 (default)</p>	<p>TDC3-8-F-B-45 S/N: 04-00-07-16-33-002 ID: 2 (default)</p>
<p>TDC3-2-B-B-31 S/N: 04-00-02-17-48-005 ID: 1 (default)</p>	

Check item when completed



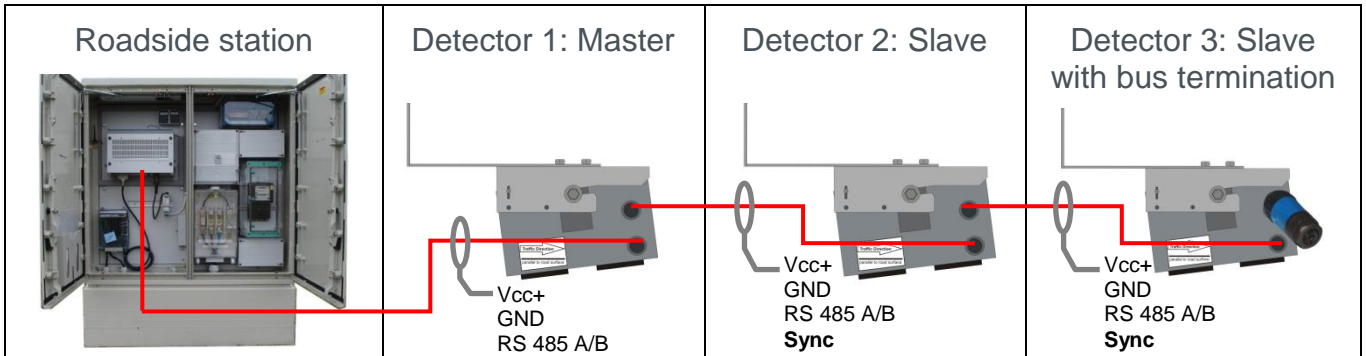
Detector model fits mounting location
Detector is properly aligned

2 Wiring

Device plug		Device socket
	<p>1 Supply, Vcc +</p> <p>2 Trigger (optional)</p> <p>3 GND</p> <p>4 Synchronization</p> <p>5 RS 485 Signal A</p> <p>6 RS 485 Signal B</p>	<p>1 Supply, Vcc +</p> <p>2 Trigger (optional)</p> <p>3 GND</p> <p>4 Synchronization</p> <p>5 RS 485 Signal A</p> <p>6 RS 485 Signal B</p>

Turn page

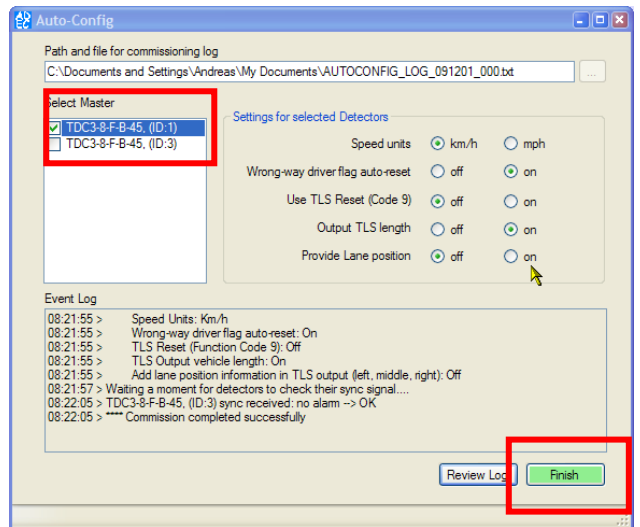
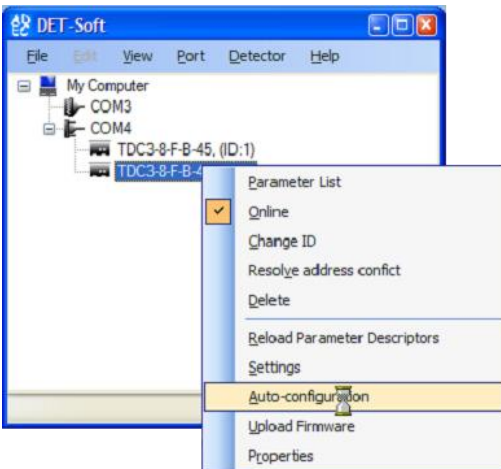
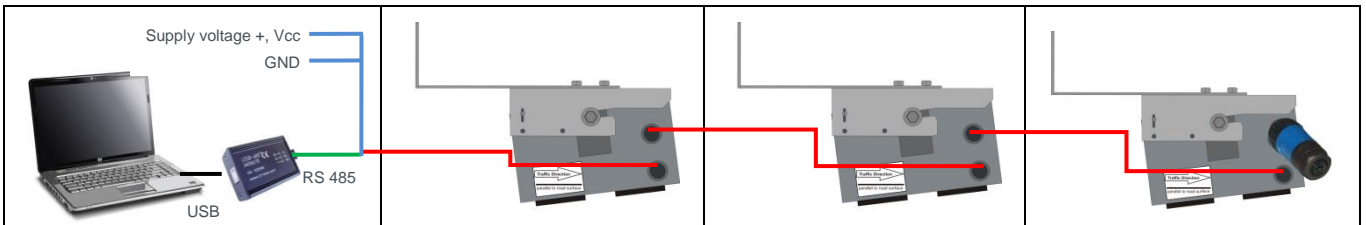
Example: Section with 3 detectors



All detectors wired according to wiring guidelines

Supply voltage for all detectors is within permitted range of (10.5 – 30) V DC

3 Commissioning



All detectors successfully completed the auto configuration process

Location ID: _____ Serial number of detector: _____

Commission process successfully completed according to these instructions: Yes No

Verified plausibility of traffic data (recommended): Yes No

Technician: _____ Date: _____