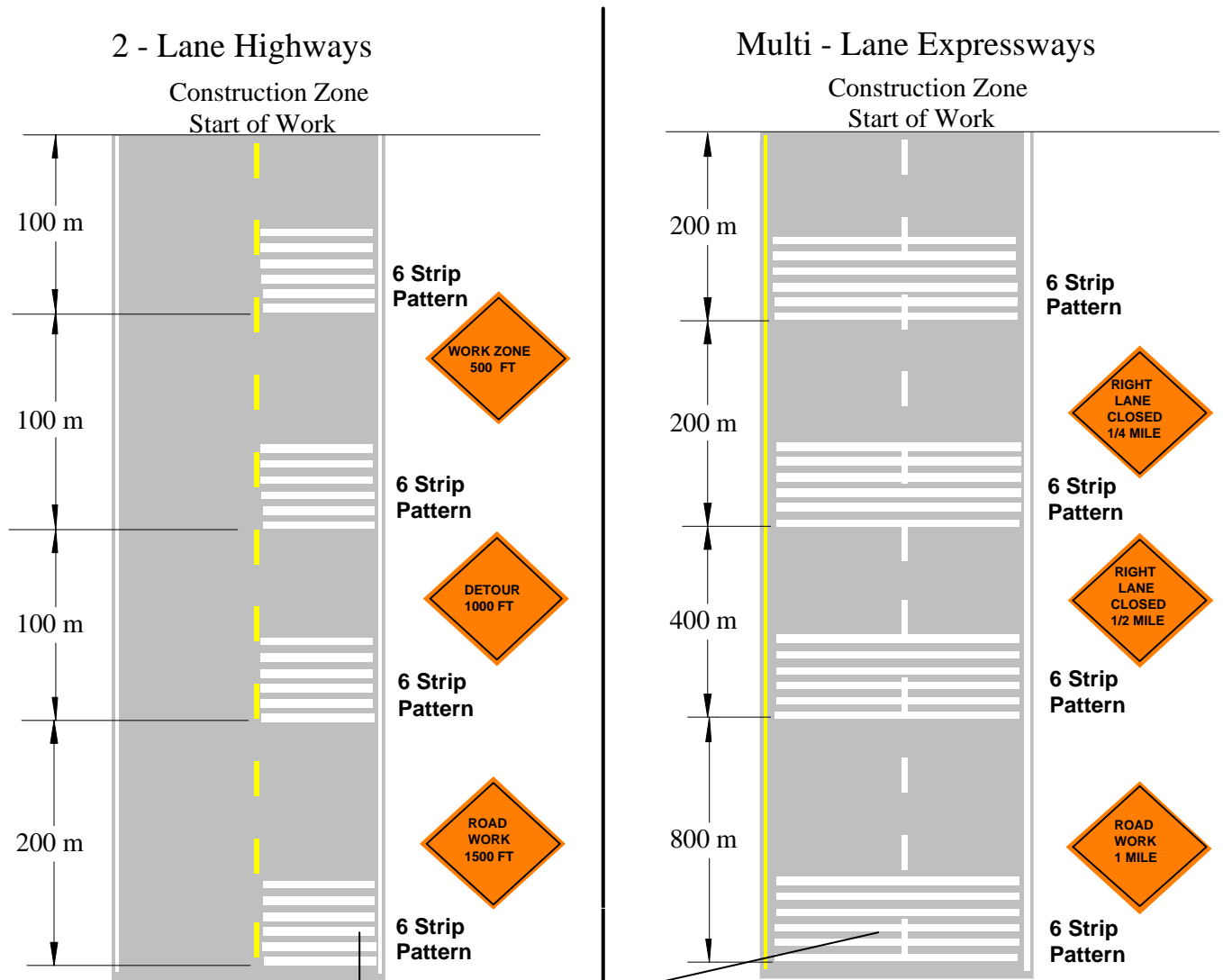


SUGGESTED LAYOUT DETAILS

TEMPORARY RUMBLE STRIPS



Recommended Spacing:
30 to 40 mph – 12 inches
40 to 55 mph – 24 inches
55 + mph - 36 inches
Based on 6" wide rumble strip

Note: Signing and layout shown is for example purposes only. All construction zone and layouts should conform to the Manual on Uniform Traffic Control devices or applicable DOT agency specifications.

RUMBLER - Preformed Rumble Strips **Reflective and Non-Reflective** **Permanent and Temporary Applications**

Swarco Industries • P.O. Box 89 • Columbia • TN • 38402-0089
Phone 931-388-5900 • Fax 931-388-4039