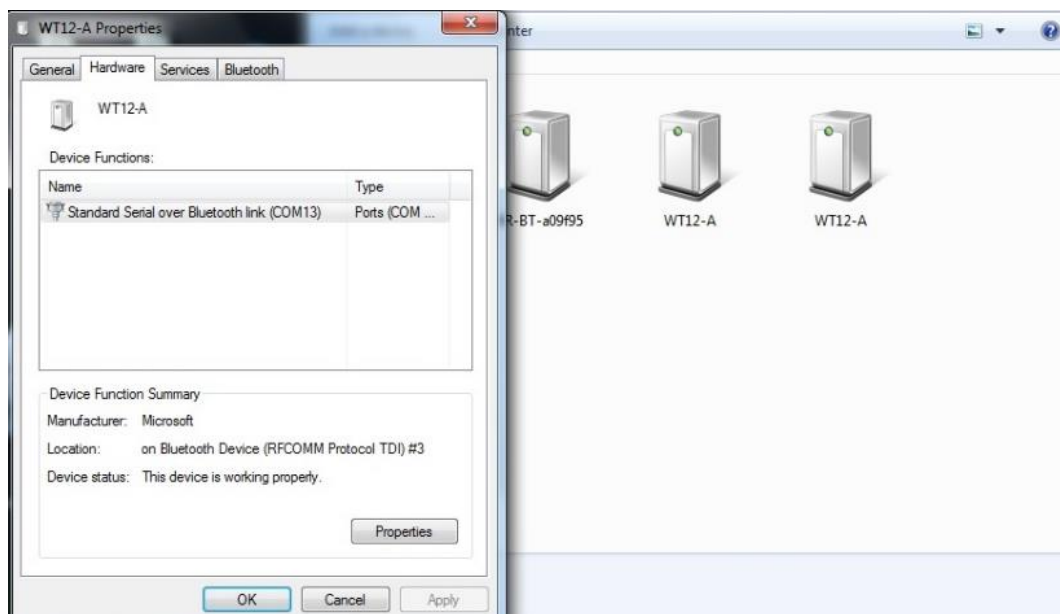


Connecting to Houston from Windows 7 and Windows 10

1 Connecting to Houston via Windows 7

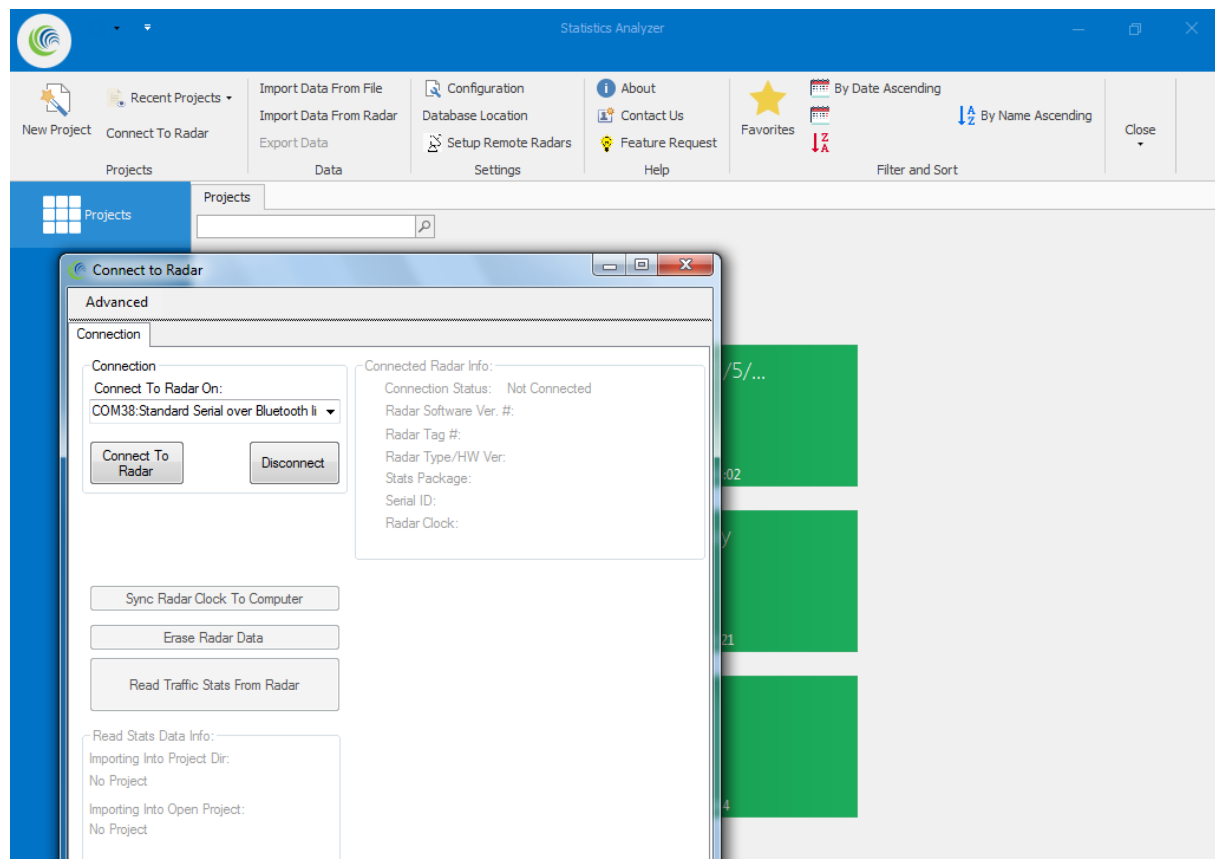
Connecting the Bluetooth

- Right click your Bluetooth icon and select 'Add Bluetooth device'
- Your computer should now see the sign
- The sign will show up as WT12-A or Bluetooth device, select this and click next
- The Bluetooth password is – 12345678
- Click next
- The Bluetooth device should now install and appear in your Bluetooth devices
- You will now have to find the port it has been assigned
- Right click on the Bluetooth device and left click properties
- Under the hardware tab it will show you your port number (note this down) and close the windows



Houston Software

- Open the Houston software
- Select projects – connect to radar
- Select port and connect to radar



2 Connecting to Houston via Windows 10

Connecting the Bluetooth

- From your start bar go to settings – devices – Bluetooth
- Your computer should see the sign as WT12-A or Bluetooth Device, select and click next
- If you need to enter a password it is : 12345678, click next and the Bluetooth device should now install and appear in your Bluetooth devices
- You will now find a port has been assigned.
- In the left-hand search bar find 'device manager', under 'ports' select the arrow
- Look for 'standard serial over link' and it will give you a port – note this down (it may give you two numbers, note both down but it is usually the first you need)

Houston Software

- Open the Houston software
- Select projects – connect to radar
- Select port and connect to radar