

TECHNICAL INFORMATION
EUROTAC



EUROTAC

1	Main characteristics / Fields of applications	3
2	Technical Data.....	3
3	Application techniques	3
3.1	Application conditions.....	4
4	Dimensional characteristics	4
5	Packaging	4
6	Storage.....	4
7	Validity	4
8	Safety informations	4
9	Annex 1 – Sheet with 41 domes	5
10	Annex 2 – Sheet with 7 ribs	6

Important Information:

Please consider our General Terms and Conditions and the general notes of the Technical Information Sheet! No liability is accepted for any errors! The information is provided to our best knowledge and experience. This information is, however, no warranty for any properties of the material. We provide this information without obligation, also regarding the rights of third parties. The user has to make sure that the material is appropriate for the respective application.

1 Main characteristics / Fields of applications

- Tactile markings for the guidance of visually handicapped pedestrians;
- Plates with conical domes or trapezoidal ribs profiles;
- For outdoor and indoor use;
- Suitable for: access passages, bus stops, railway platforms, railway passages, stairs, ramps;
- Based on methyl methacrylate resins (MMA);
- Flexible and easy to apply;
- High resistance due to the profiled surface;
- High durable;
- Resistant to ice, snow, liquids (saline solutions, fuels, lubricants, oils, water), UV;
- Suitable for all types of surfaces: concrete or asphalt.

2 Technical Data

Sheets with domes	300 x 300 mm (± 3 mm), bottom sheet thickness: 1,8 mm ($\pm 0,2$ mm)
Number of domes	41
Profile, dimensions	62,5 mm (± 1 mm) pitch, conical frustum, 4,8 mm high ($\pm 0,2$ mm)
Sheets with raised ribs	300 x 300 mm (± 3 mm), bottom sheet thickness: 1,8 mm ($\pm 0,2$ mm)
Number of ribs	7
Profile, dimensions	40 mm (± 1 mm) pitch, trapezoidal, 4,5 mm high ($\pm 0,2$ mm)
Surface	Anti-skidding
Colors	White RAL 9016. Other colors on request.
Material	Methacrylate / cold plastic
Hardness	30 – 50 ShD
Application	With methacrylate adhesive
Cleaning	Stain-resistant
Resistance	To salt, cold, water, UV

3 Application techniques

1. Cleaning the surface

The surface must be dry, clean and free of grease and oil.

2. Pre-marking and taping

Mark the outline with tape.

3. Applying special adhesive

Apply the special adhesive in an even layer.

4. Laying the plates

Lay the plates on the fresh layer of special adhesive and gently press them into position.



TIP

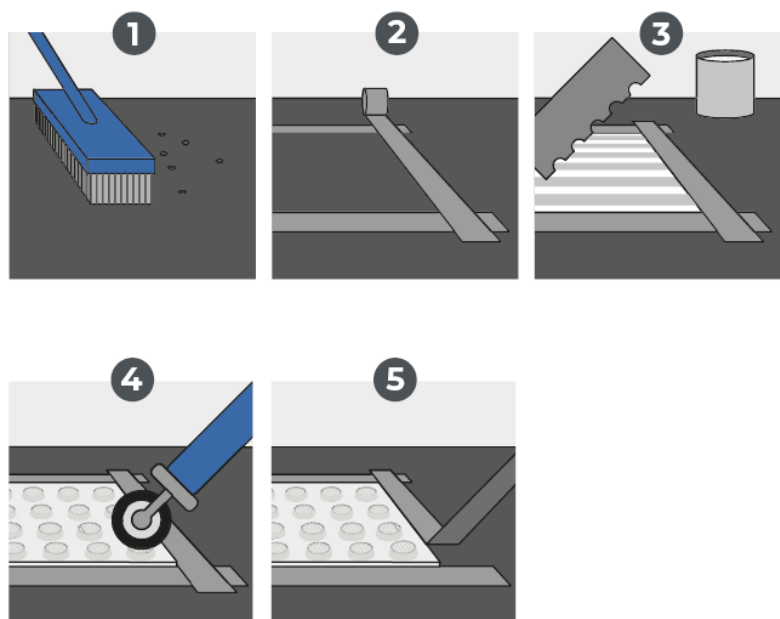
We recommend using a pressure roller to achieve a perfect bond with no bubbles between the plates and the surface (special adhesive).

5. Removing the masking tape



TIP

Remove the tape before the special adhesive is cured.



3.1 Application conditions

- Environment temperature: min. 5 °C;
- Relative humidity: maximum 75 %;
- Surface temperature: + 5 °C + 45 °C;
- Humidity of concrete surfaces must be maximum 3 %.

4 Dimensional characteristics

See annex 1 and 2.

5 Packaging

Cardboard boxes containing 10 pieces.

6 Storage

In well ventilated roofed spaces, only in original sealed packs, protected from heating sources and sun, ensuring temperatures of + 5 °C – + 35 °C.

7 Validity

12 months from manufacturing date, in the original packages, respecting the storage regulations.

8 Safety informations

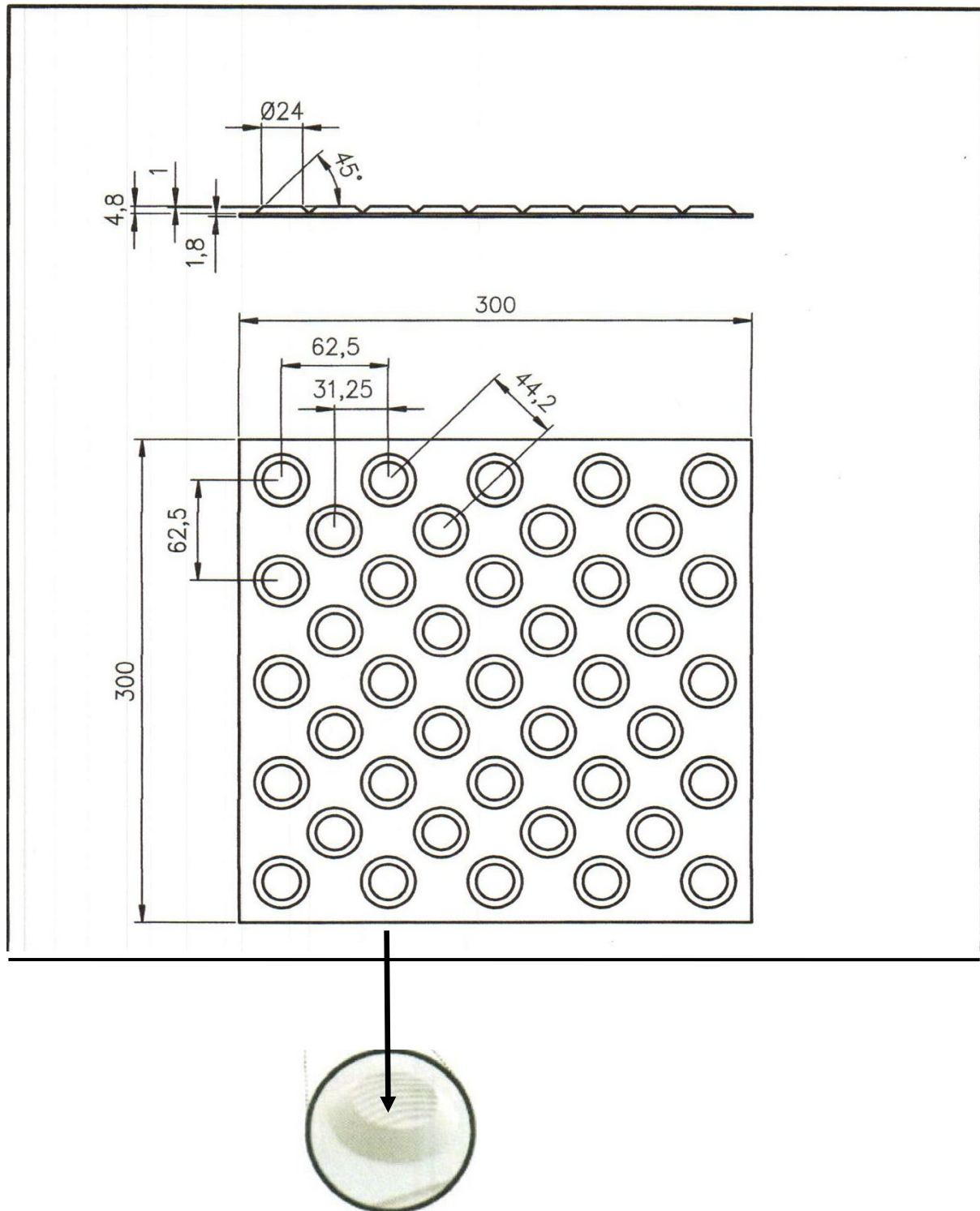
EUROTAC products are not classified as dangerous goods according to EC 1272/2008 Regulation (CLP). Safety data sheets is available on request.

NOTE All this information regarding the performance and use of the product have a general character, therefore we recommend the testing of the product EUROTAC in the specific conditions of the beneficiary.

Please contact the producer for further information.

The decision regarding the utilization of the product EUROTAC is exclusive of the user.

9 Annex 1 – Sheet with 41 domes



10 Annex 2 – Sheet with 7 ribs

